

INSTALLATION OF EMI FILTER COMPANY "TALON GRIP" PRESS-IN FILTERS

HOLE SIZE:

0.136"±0.002" diameter. We recommend drilling an undersized hole (0.125") and reaming to the final size. DO NOT CHAMFER EDGES! A slight break of no more than .005" deep is recommended. If the filter is installed in a hole that is approaching the minus limit of the tolerance, slightly higher installation forces will be needed. DO NOT try to install these filters in holes smaller than 0.134" in diameter.

INSTALLATION TOOL:

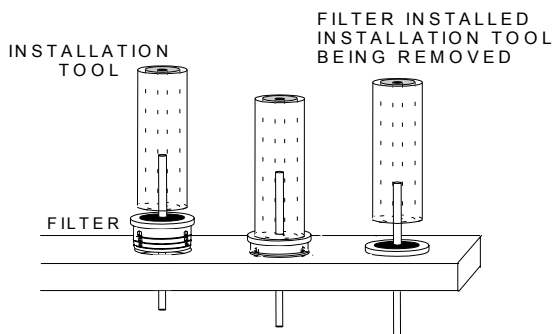
For *evaluation* purposes, EMI Filter Company offers a simple installation tool, Part Number: **IT-PZ**. that can be inserted into the chuck of a drill press, or similar equipment. This same tool can also be used to remove the filters, if desired. If you wish to make your own installation tool to fit a particular piece of equipment, please see illustration below.

INSTALLING PRESS-IN FILTERS:

- 1) Insert the lead on the flange end of the filter into the installation tool. The tool is designed to hold the filter during installation.
- 2) Lower the drill press chuck, making sure that the filter enters the hole squarely and continue pressing until the flange contacts the face of the bulkhead.
- 3) Back the tool off of the filter lead. The filter is installed.

SEALANT:

If more of an atmospheric seal/increased hold is desired, a small drop about 1/8" diameter of EMI's Part Number: **PLF-2ML** sealer can be applied to the area where the flange comes in contact with the bulkhead face. The sealer will wick under the flange and fill all of the open areas in the mounting hole. Full cure of this material is achieved over night at room temperature. Be careful that you do not apply too much. Do not try to cure faster by heating.



INSTALLATION STEPS
FROM LEFT TO RIGHT

- * Filter inserted into the installation tool and started into the mounting hole.
- * Filter being pressed into place.
- * Filter installed and installation tool being removed.

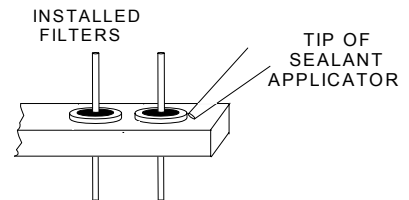
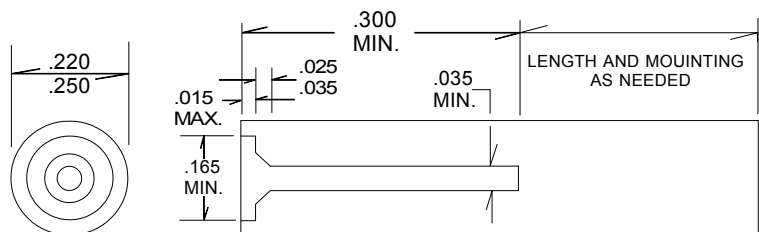


Illustration showing the position of the sealant applicator tip when applying sealant after filter installation.



DIMENSIONS IN INCHES

The above illustration is the general outline of an installation tool for the "PZ" series press-in filters. Be sure to include the .025-.035 deep chamfer so that the sealing epoxy of the filters is protected from excessive stress. If you have any questions regarding the installation of these filters, please contact us.

	<p>EMI FILTER COMPANY 12750 59th Way North Clearwater, FL 33760 727-585-7990 Fax: 727-586-5138 Toll Free: 1-800-323-7990 email: sales@emifiltercompany.com</p>
---	--